

ELECTRA Light

*Gas and electric
heating...*

Wall-mounted electric boiler

General description

Our company MORA-TOP, an inland manufacturer of heating equipment, introduces hereby a wall-mounted electric boiler, type ELECTRA LIGHT, intended for use in heating systems with forced circulation. Its design utilises sophisticated technological components. This boiler is designed particularly for residential heating and common spaces with loss of heat up to 7,5 kW, i.e. for low-energy houses, homes and smaller weekend cottages. Besides classical heating it can be also used as a standby power unit for modern heating systems (heat pumps, solar systems etc.). The boiler Electra Light is not equipped with equitherm regulation, expansion tank and GSM control.

Performance classes

EK08 - 7,5 kW

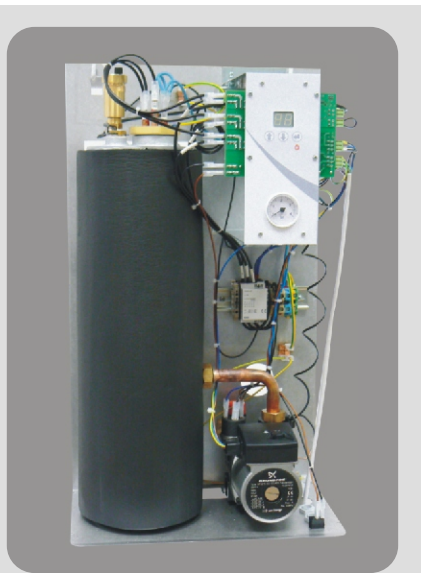
Features

- Comfort setting and control through multifunctional LCD
- High efficiency up to 99%
- Small size, modern design
- Silent running
- Automatic regulation, energy savings
- Reaction dynamics of heating rods (PI regulation) - energy savings
- Rotation of heating rods - prolonged service life
- Continuous power regulation as from 2,5 kW with switching of heating rods gradually - energy savings
- Possible connection of DHW accumulator additionally
- Function of preferential DHW heating
- Standby mode
- Automatic venting
- Possible cascade arrangement



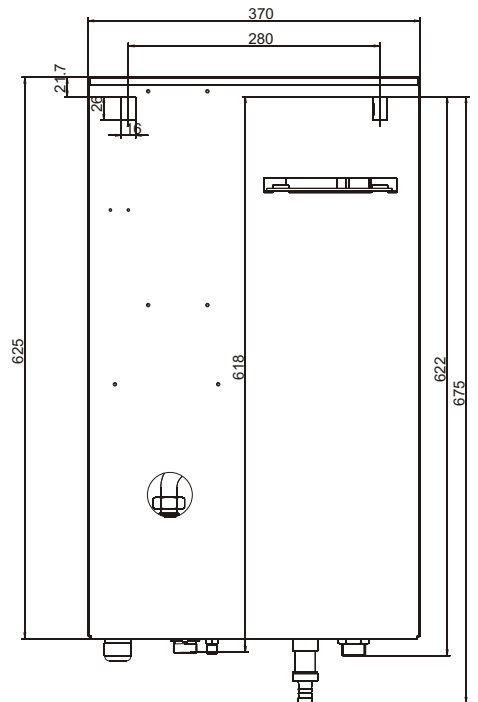
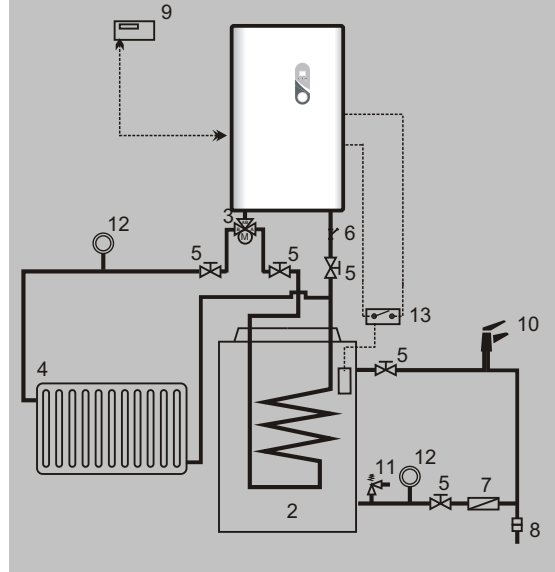
Advantages

- Comfort setting and control through multifunctional LCD
- High efficiency up to 99%
- Small size, modern design
- Silent running
- Automatic regulation - energy savings
- Reaction dynamics of heating rods (PI regulation) - energy savings
 - prevents overheating and exceeding of pre-set water temperature
- Rotation of heating rods prolonged service life
- Continuous power regulation as from 2,5 kW with switching of heating rods gradually - energy savings
- Boiler switching system through centralized ripple control and room thermostat
- All protections and unblocking functions
 - protection of pump and three-way valve (adjustable pump run-out periods as to time and temperature)
 - frost protection
- Optional hysteresis of heating water
- Possible connection of DHW accumulator additionally
- Function of preferential DHW heating
- Information on pressure in heating system through manometer
- Standby mode at keeping all protections
- Automatic venting
- 3 heating systems
 - for water heating only
 - with room thermostat only
 - with room thermostat and DHW preparation
- Possible cascade arrangement



Layout diagram

- 1 - Boiler
- 2 - Water boiler
- 3 - Powered three-way valve
- 4 - Heating system
- 5 - Check valve
- 6 - Filter
- 7 - Closing flap
- 8 - DHW treatment
- 9 - Room thermostat
- 10 - Draw point
- 11 - DHW safety valve
- 12 - Expansion tank
- 13 - Water boiler thermostat



Control board with display

All information and data are putted on multifunctional LCD communicating in Czech.

- Current/pre-set heating water temperature
- Current boiler mode:
 - ZI - winter - DHW and home heating
 - LE - summer - DHW heating only
- Error messages
- Information on parameter setting
- Current boiler mode (heating ON/OFF)

LCD information on:

- actual/pre-set temperature
- operating mode
- error code
- parameter setting

ON - editing
OFF - operation

ON - heating system runs (at least one rod)
OFF - no heating
Flashing - under-/over-voltage in mains

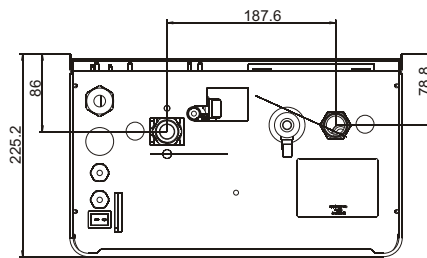
Short pushing:
- confirmation (storage)
- return from standby mode
- access to parameter setting
Long pushing (3 sec):
- standby mode

Change of required value \ominus

Change of required value \oplus

Information on current pressure in heating system

Dimensions



Technical parameters

	Unit	ELECTRA LIGHT 08
Heat rate	kW	7,5
Rated current	A	3x12 / 1x36
Electric network	V	3x220/380 V+N+PE/50 HZ 1x220 V+N+PE/50 HZ
Max. rated current	A	3x16 / 1x40
Pump input power (stage I, II, III)	W	50/60/70
Main circuit breaker	A	3x16 / 1x40
Rated current of control fuse	A	0,315
Relay service life		250 000 cycles at 16 A, 250 V
Min. operating overpressure in heating system	bar	0,4
Max. operating overpressure in heating system	bar	3
Max. temperature of heating water	°C	80
Usable boiler capacity	l	5,8
Efficiency at rated power	%	99
Feeder cable CYKY	mm ²	3x2,5 / 1x6
Feeder cable AYKY	mm ²	3x4 / 1x10
Expansion tank capacity	l	Tank not included in standard boiler delivery
Number of boilers in cascade arrangement	-	According to cascade regulator type
Dimensions (height/width/depth)	mm	625/370/225
Boiler dry weight	kg	19